

CONTENTS:

Drawing Number

PLA605-L01 Context, Plant Schedule and Tree Detail

PLA605-L02 Street Tree Plan 01

PLA605-L03 Street Tree Plan 02

PLA605-L04 Street Tree Plan 03

MASTER PLANT SCHEDULE

Code	Botanical Name	Common Name	Plant Size	Qty
Trees				
AFJ	<i>Acer x freemanii</i> 'Jeffersred' Autumn Blaze	Autumn Blaze Maple	45 ltr container, min. 2.2m high	4
FPC	<i>Fraxinus pennsylvanica</i> 'Cimmzam'	Cimmaron Ash	45 ltr container, min. 2.2m high	7
MAE	<i>Melia azedarach</i> 'Elite'	Elite White Cedar	45 ltr container, min. 2.2m high	28

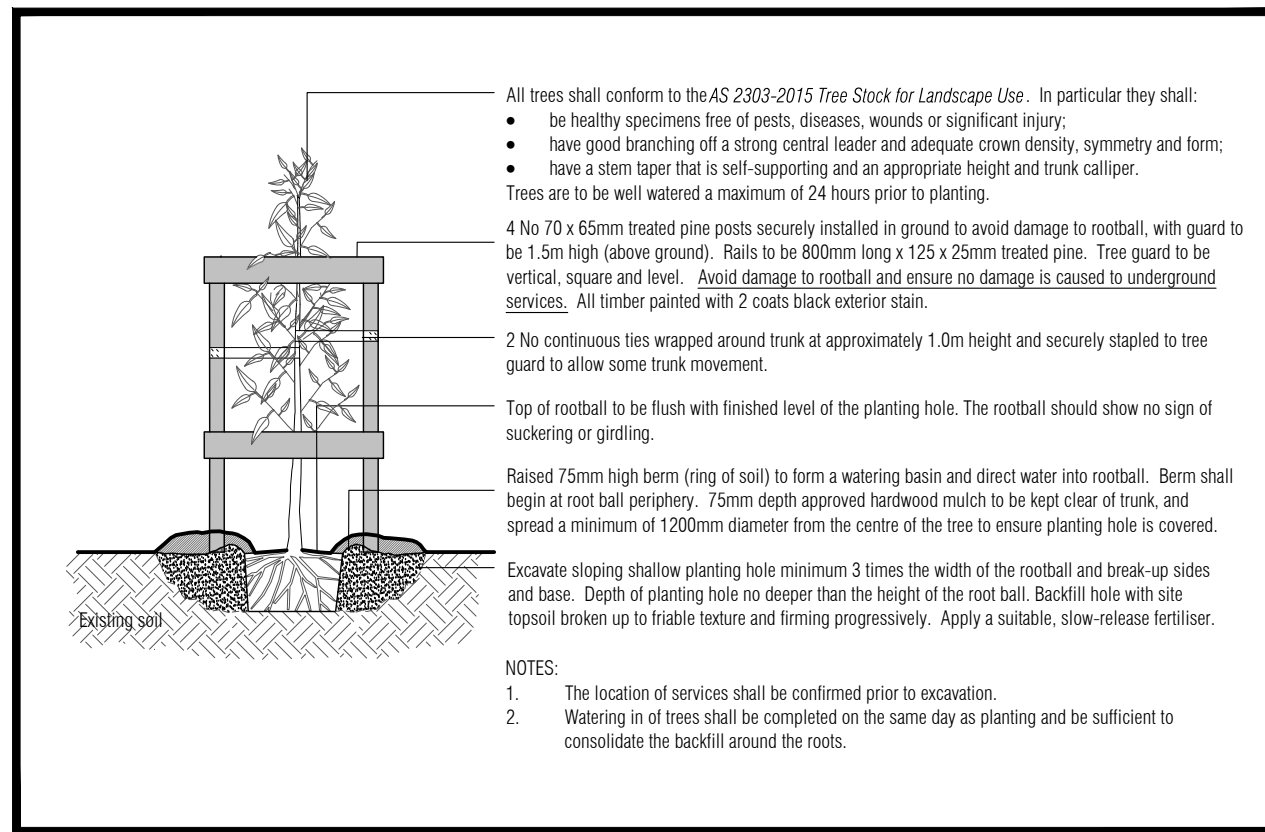
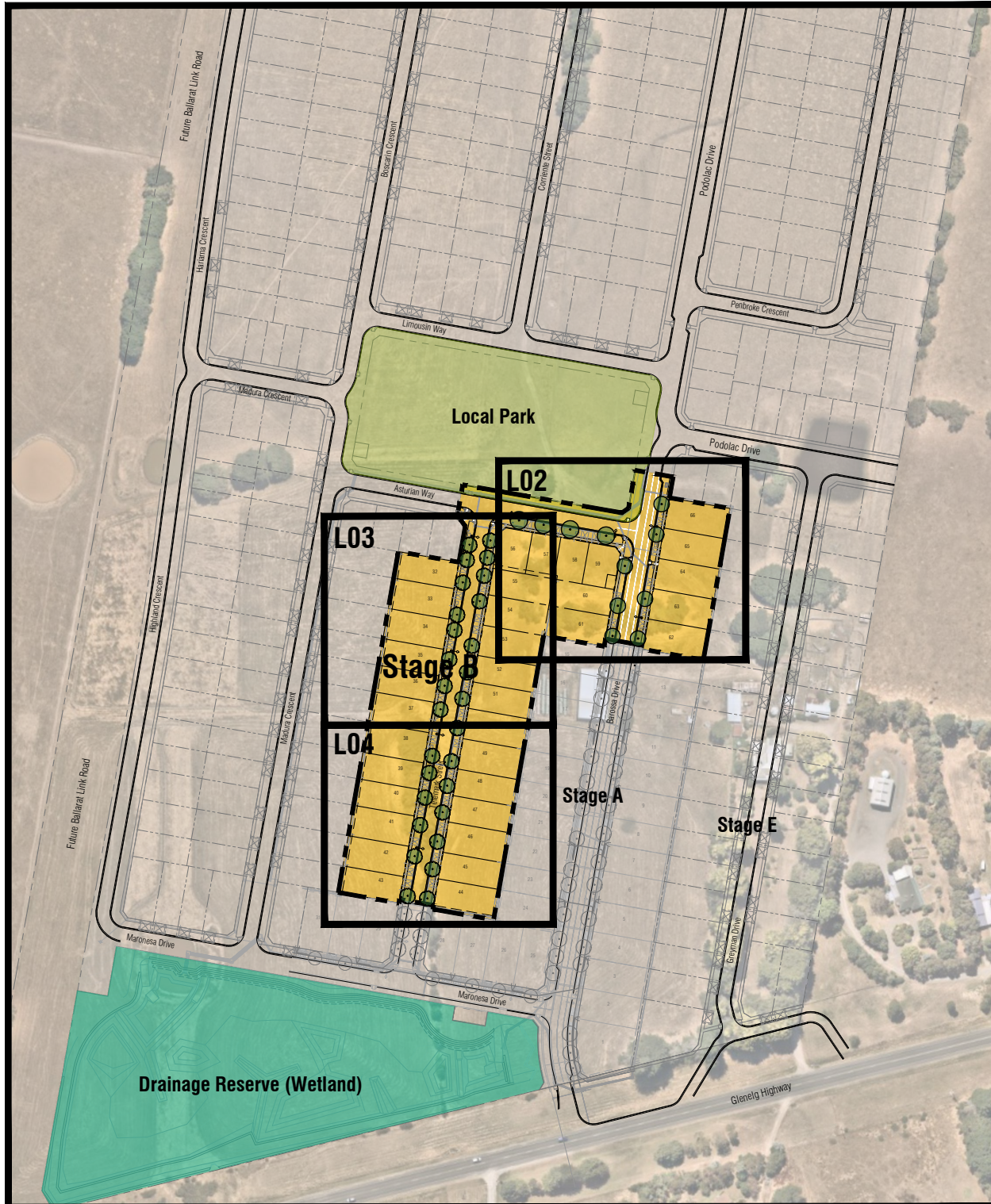
P3	Revisions re: power and NBN plans	AD	01.08.24
P2	Revisions re: civil plans	AD	29.07.24
P1	Preliminary Issue for Client Review	AD	01.07.24
Revision	Description	Initials	Date

PRELIMINARY ISSUE

Planning Permit PLP/2023/80

Notes

- All dimensions to be checked on site before commencing work. All measurements are in metres, unless otherwise shown.
- The locations of underground services and light poles are indicative only - refer to engineering drawings for design service offsets.
- The location and depth of services shall be verified on site prior to the commencement of works. The Contractor shall be liable for any damage to services during the landscape works.
- Standard Street Tree Offsets.
 - Standard offset from the back of kerb is 1.2m unless otherwise shown.
 - It is assumed that all Underground Cable in close proximity to the 'tree zone' * (5m diameter x 600mm depth) shall be within conduits or have cover slabs to provide a higher level of infrastructure protection. (*Refer 12.0 'Distribution Construction Standard Underground Trenching GA211' by Citypower and Powercor).
 - Minimum setback of 2.5m to underground electricity cable joints / tees.
 - Minimum setback of 2.0m to service assets including pits and conduit crossings.
 - Minimum setback of 0.75m to domestic service tapping points and 2.0m to stormwater outlets.
 - Minimum setback of 1.2m to footpath crossings and 3.0m to driveways where they are existing or known.
 - Minimum setback of 3.0m to fire hydrants.
 - Minimum setback of 4.0m to light poles.
- Proposed Street Trees.
 - Tree position in front of lots may change slightly due to 'actual' location of services.
 - Setback from intersection (kerb) shall be a minimum of 10m in accordance with City of Ballarat Landscape Design Manual (LDM).
 - Following City of Ballarat approval of these landscape plans any variation to the number or species of street trees requires approval by City of Ballarat.
- Planting. All trees, shrubs and groundcovers shall be planted in accordance with LDM, unless otherwise specified.
- Mulch. Mulch shall be recycled hardwood (or similar approved) in general accordance with LDM, unless otherwise specified.
- Grass Seeding. Reseed nature strips and other grassed areas where there has been disturbance due to landscape works with a proprietary grass seed mix in accordance with the LDM.



TYPICAL TREE PLANTING DETAIL

NOT TO SCALE.

CONTEXT AND SHEET LAYOUT - Stage B Aberdeen

PLOT
LANDSCAPE ARCHITECTS
WWW.PLOT.AU
03 9497 2418

PRELIMINARY

Client / Project

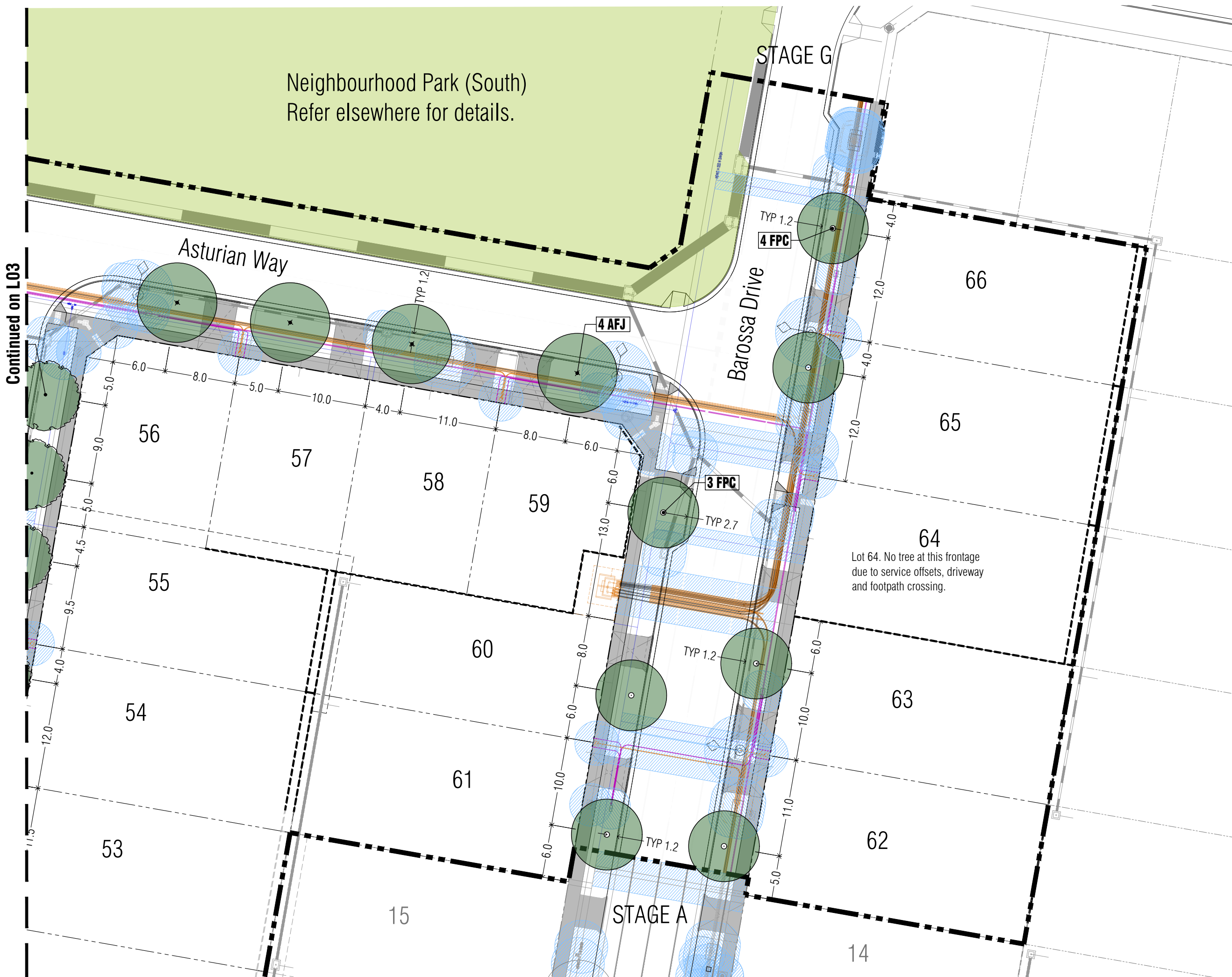
Intega
Stage B Aberdeen
520 Glenelg Hwy, Winter Valley

Drawing Title
Context, Plant Schedule and Tree Detail

Drawn	Approved	Date	North
AD	RH	01/08/2024	
Scale (A1)	Scale (A3)	Sheet	
NTS	NTS	1 of 4	

This drawing and design is protected by copyright © PLOT Landscape Architects Pty Ltd.

Drawing Number	Revision
PLA605-L01	P3



Continued on L03

Neighbourhood Park (South)
Refer elsewhere for details.

P3	Revisions re: power and NBN plans	AD	01.08.24
P2	Revisions re: civil plans	AD	29.07.24
P1	Preliminary Issue for Client Review	AD	01.07.24
Revision	Description	Initials	Date
PRELIMINARY ISSUE			
Status			

Planning Permit PLP/2023/80

- Notes**
- All dimensions to be checked on site before commencing work. All measurements are in metres, unless otherwise shown.
 - The locations of underground services and light poles are indicative only - refer to engineering drawings for design service offsets.
 - The location and depth of services shall be verified on site prior to the commencement of works. The Contractor shall be liable for any damage to services during the landscape works.
 - Standard Street Tree Offsets.
 - Standard offset from the back of kerb is 1.2m unless otherwise shown.
 - It is assumed that all Underground Cable in close proximity to the 'tree zone' * (5m diameter x 600mm depth) shall be within conduits or have cover slabs to provide a higher level of infrastructure protection. (*Refer 12.0 'Distribution Construction Standard Underground Trenching GA211' by Citypower and Powercor).
 - Minimum setback of 2.5m to underground electricity cable joints / tees.
 - Minimum setback of 2.0m to service assets including pits and conduit crossings.
 - Minimum setback of 0.75m to domestic service tapping points and 2.0m to stormwater outlets.
 - Minimum setback of 1.2m to footpath crossings and 3.0m to driveways where they are existing or known.
 - Minimum setback of 3.0m to fire hydrants.
 - Minimum setback of 4.0m to light poles.
 - Proposed Street Trees.
 - Tree position in front of lots may change slightly due to 'actual' location of services.
 - Setback from intersection (kerb) shall be a minimum of 10m in accordance with City of Ballarat Landscape Design Manual (LDM).
 - Following City of Ballarat approval of these landscape plans any variation to the number or species of street trees requires approval by City of Ballarat.
 - Planting. All trees, shrubs and groundcovers shall be planted in accordance with LDM, unless otherwise specified.
 - Mulch. Mulch shall be recycled hardwood (or similar approved) in general accordance with LDM, unless otherwise specified.
 - Grass Seeding. Reseed nature strips and other grassed areas where there has been disturbance due to landscape works with a proprietary grass seed mix in accordance with the LDM.
 - Refer to drawing L01 for Plant Schedule.

Legend

	Proposed Street Trees - <i>Fraxinus pennsylvanica</i> 'Cinnamom' [FPC]
	Proposed Street Trees - <i>Acer x freemanii</i> 'Jeffersred' [AFJ]
	Plant Label and Code
	Service Offsets
	Retaining Walls (civil works)

PLOT
LANDSCAPE ARCHITECTS
WWW.PLOT.LD.AU
Aberdeen 051 465 1400 087 324 128

PRELIMINARY

Client / Project

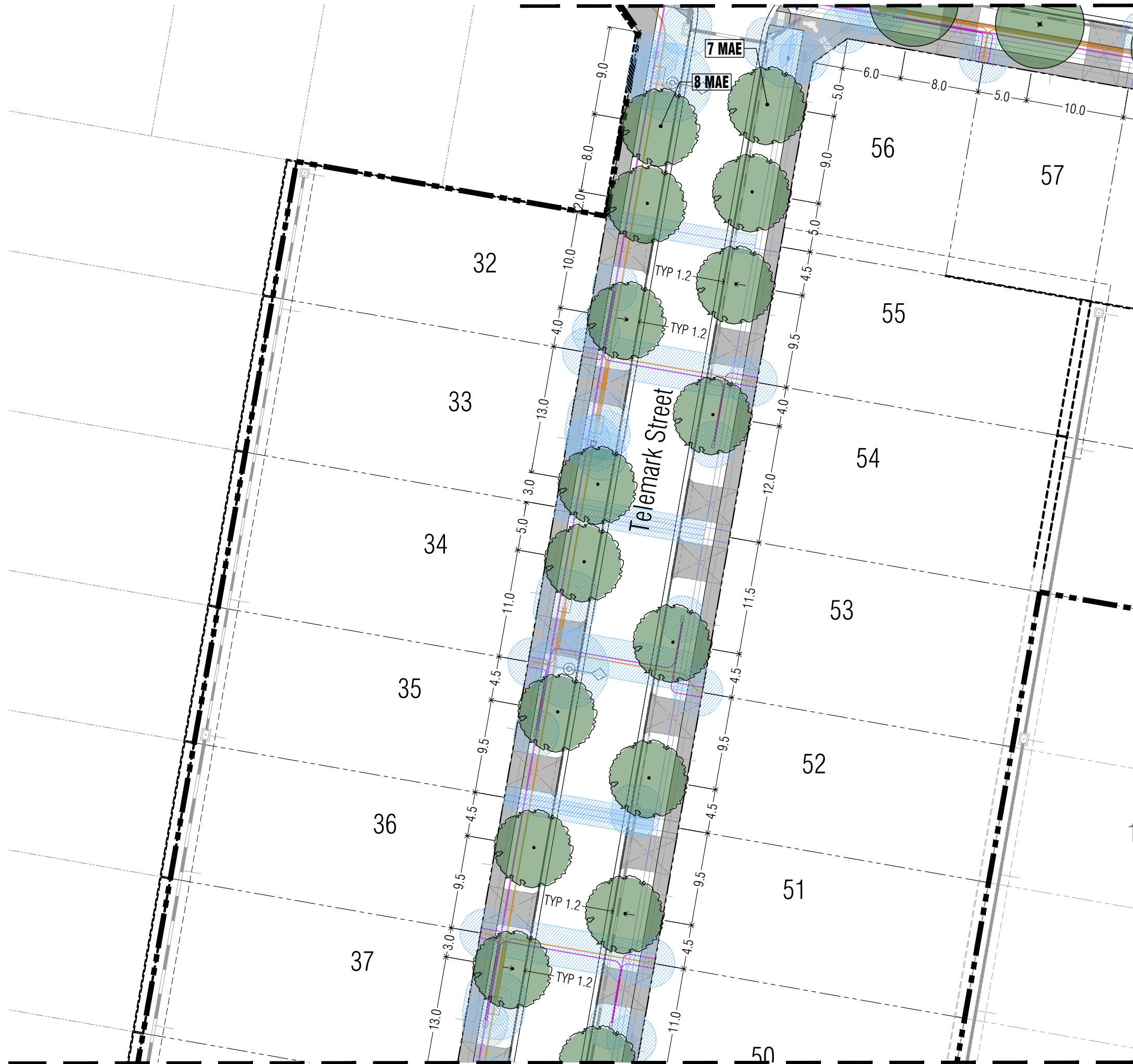
Intega
Stage B Aberdeen
520 Glenelg Hwy, Winter Valley

Street Tree Plan 01

Drawn	Approved	Date	North
AD	RH	01/08/2024	
Scale (A1)	Scale (A3)	Sheet	
1:200	1:400	2 of 4	

PLA605-L02 P3

Continued on L02



Continued on L04

P3	Revisions re: power and NBN plans	AD	01.08.24
P2	Revisions re: civil plans	AD	29.07.24
P1	Preliminary Issue for Client Review	AD	01.07.24
Revision	Description	Initials	Date
PRELIMINARY ISSUE			
Planning Permit PLP/2023/80			

- Notes**
- All dimensions to be checked on site before commencing work. All measurements are in metres, unless otherwise shown.
 - The locations of underground services and light poles are indicative only - refer to engineering drawings for design service offsets.
 - The location and depth of services shall be verified on site prior to the commencement of works. The Contractor shall be liable for any damage to services during the landscape works.
 - Standard Street Tree Offsets.
 - Standard offset from the back of kerb is 1.2m unless otherwise shown.
 - It is assumed that all Underground Cable in close proximity to the 'tree zone' * (5m diameter x 600mm depth) shall be within conduits or have cover slabs to provide a higher level of infrastructure protection. (*Refer 12.0 'Distribution Construction Standard Underground Trenching GA211' by Citypower and Powercor).
 - Minimum setback of 2.5m to underground electricity cable joints / tees.
 - Minimum setback of 2.0m to service assets including pits and conduit crossings.
 - Minimum setback of 0.75m to domestic service tapping points and 2.0m to stormwater outlets.
 - Minimum setback of 1.2m to footpath crossings and 3.0m to driveways where they are existing or known.
 - Minimum setback of 3.0m to fire hydrants.
 - Minimum setback of 4.0m to light poles.
 - Proposed Street Trees.
 - Tree position in front of lots may change slightly due to 'actual' location of services.
 - Setback from intersection (kerb) shall be a minimum of 10m in accordance with City of Ballarat Landscape Design Manual (LDM).
 - Following City of Ballarat approval of these landscape plans any variation to the number or species of street trees requires approval by City of Ballarat.
 - Planting. All trees, shrubs and groundcovers shall be planted in accordance with LDM, unless otherwise specified.
 - Mulch. Mulch shall be recycled hardwood (or similar approved) in general accordance with LDM, unless otherwise specified.
 - Grass Seeding. Reseed nature strips and other grassed areas where there has been disturbance due to landscape works with a proprietary grass seed mix in accordance with the LDM.
 - Refer to drawing L01 for Plant Schedule.

Legend

	Proposed Street Trees - <i>Melia azedarach</i> 'Elite' [MAE]
	Plant Label and Code
	Service Offsets
	Retaining Walls (civil works)



PRELIMINARY

Client / Project

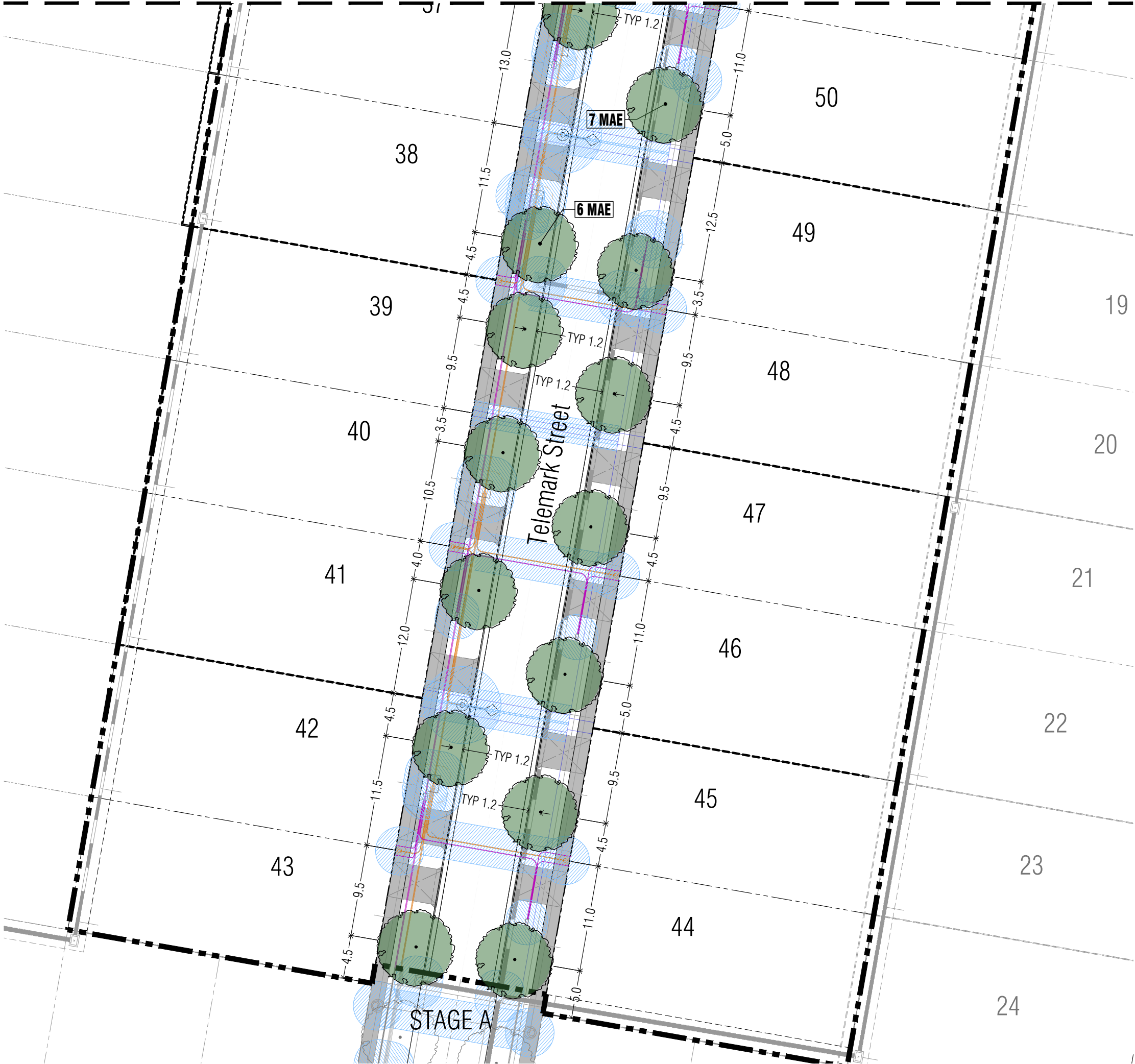
Intega
Stage B Aberdeen
520 Glenelg Hwy, Winter Valley

Street Tree Plan 02

Drawn	Approved	Date	North
AD	RH	01/08/2024	
Scale (A1)	Scale (A3)	Sheet	
1:200	1:400	3 of 4	

PLA605-L03 P3

Continued on L03



P3	Revisions re: power and NBN plans	AD	01.08.24
P2	Revisions re: civil plans	AD	29.07.24
P1	Preliminary Issue for Client Review	AD	01.07.24
Revision	Description	Initials	Date
PRELIMINARY ISSUE			

Planning Permit PLP/2023/80

- Notes**
- All dimensions to be checked on site before commencing work. All measurements are in metres, unless otherwise shown.
 - The locations of underground services and light poles are indicative only - refer to engineering drawings for design service offsets.
 - The location and depth of services shall be verified on site prior to the commencement of works. The Contractor shall be liable for any damage to services during the landscape works.
 - Standard Street Tree Offsets.
 - Standard offset from the back of kerb is 1.2m unless otherwise shown.
 - It is assumed that all Underground Cable in close proximity to the 'tree zone' * (5m diameter x 600mm depth) shall be within conduits or have cover slabs to provide a higher level of infrastructure protection. (*Refer 12.0 'Distribution Construction Standard Underground Trenching GA211' by Citypower and Powercor).
 - Minimum setback of 2.5m to underground electricity cable joints / tees.
 - Minimum setback of 2.0m to service assets including pits and conduit crossings.
 - Minimum setback of 0.75m to domestic service tapping points and 2.0m to stormwater outlets.
 - Minimum setback of 1.2m to footpath crossings and 3.0m to driveways where they are existing or known.
 - Minimum setback of 3.0m to fire hydrants.
 - Minimum setback of 4.0m to light poles.
5. Proposed Street Trees.
- Tree position in front of lots may change slightly due to 'actual' location of services.
 - Setback from intersection (kerb) shall be a minimum of 10m in accordance with City of Ballarat Landscape Design Manual (LDM).
 - Following City of Ballarat approval of these landscape plans any variation to the number or species of street trees requires approval by City of Ballarat.
6. Planting. All trees, shrubs and groundcovers shall be planted in accordance with LDM, unless otherwise specified.
7. Mulch. Mulch shall be recycled hardwood (or similar approved) in general accordance with LDM, unless otherwise specified.
8. Grass Seeding. Reseed nature strips and other grassed areas where there has been disturbance due to landscape works with a proprietary grass seed mix in accordance with the LDM.
9. Refer to drawing L01 for Plant Schedule.

Legend

	Proposed Street Trees - <i>Melia azedarach</i> 'Elite' [MAE]
	Plant Label and Code
	Service Offsets
	Retaining Walls (civil works)

PLOT
LANDSCAPE ARCHITECTS
PRELIMINARY

WWW.PLOT.AU
Aberdeen 08 754 4651 | 14/01/2024

Client / Project

Intega
Stage B Aberdeen
520 Glenelg Hwy, Winter Valley

Street Tree Plan 03

Drawn	Approved	Date	North
AD	RH	01/08/2024	
Scale (A1)	Scale (A3)	Sheet	
1:200	1:400	4 of 4	
Drawing Number	Revision		
PLA605-L04	P3		

This drawing and design is protected by copyright © PLOT Landscape Architects Pty Ltd.