

# CONTENTS:

## Drawing Number

**PLA600-L01 Context, Plant Schedule and Tree Detail**

**PLA600-L02 Street Tree Plan 01**

**PLA600-L03 Street Tree Plan 02**

**PLA600-L04 Street Tree Plan 03**

**PLA600-L05 Street Tree Plan 04**

# MASTER PLANT SCHEDULE

Code	Botanical Name	Common Name	Plant Size	Qty
Trees				
ELR	<i>Eucalyptus leucoxylon</i> 'Rosea'	Rosea Yellow Gum	18-20 ltr container, min. 1.2m high	6
FPC	<i>Fraxinus pennsylvanica</i> 'Cimmzam'	Cimmaron Ash	45 ltr container, min. 2.2m high	27
MAE	<i>Melia azedarach</i> 'Elite'	Elite White Cedar	45 ltr container, min. 2.2m high	6

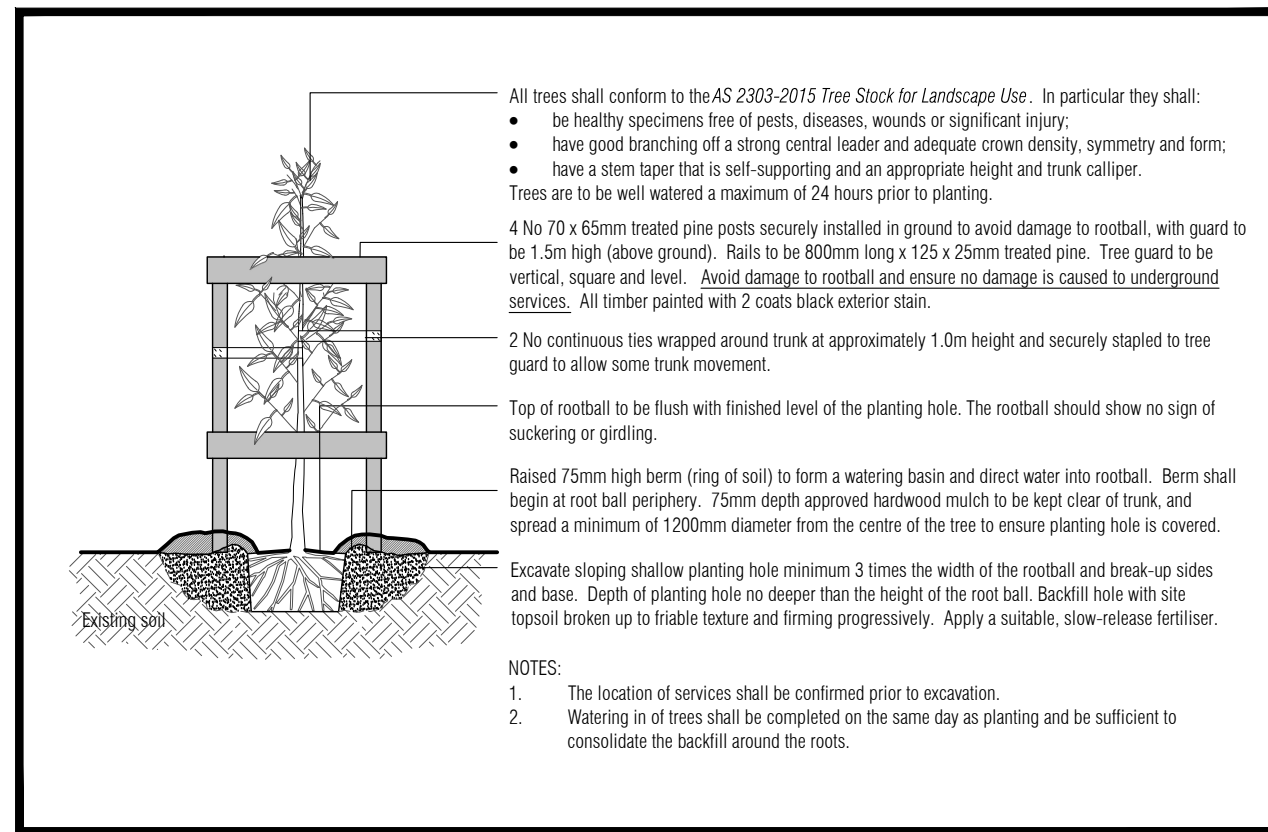
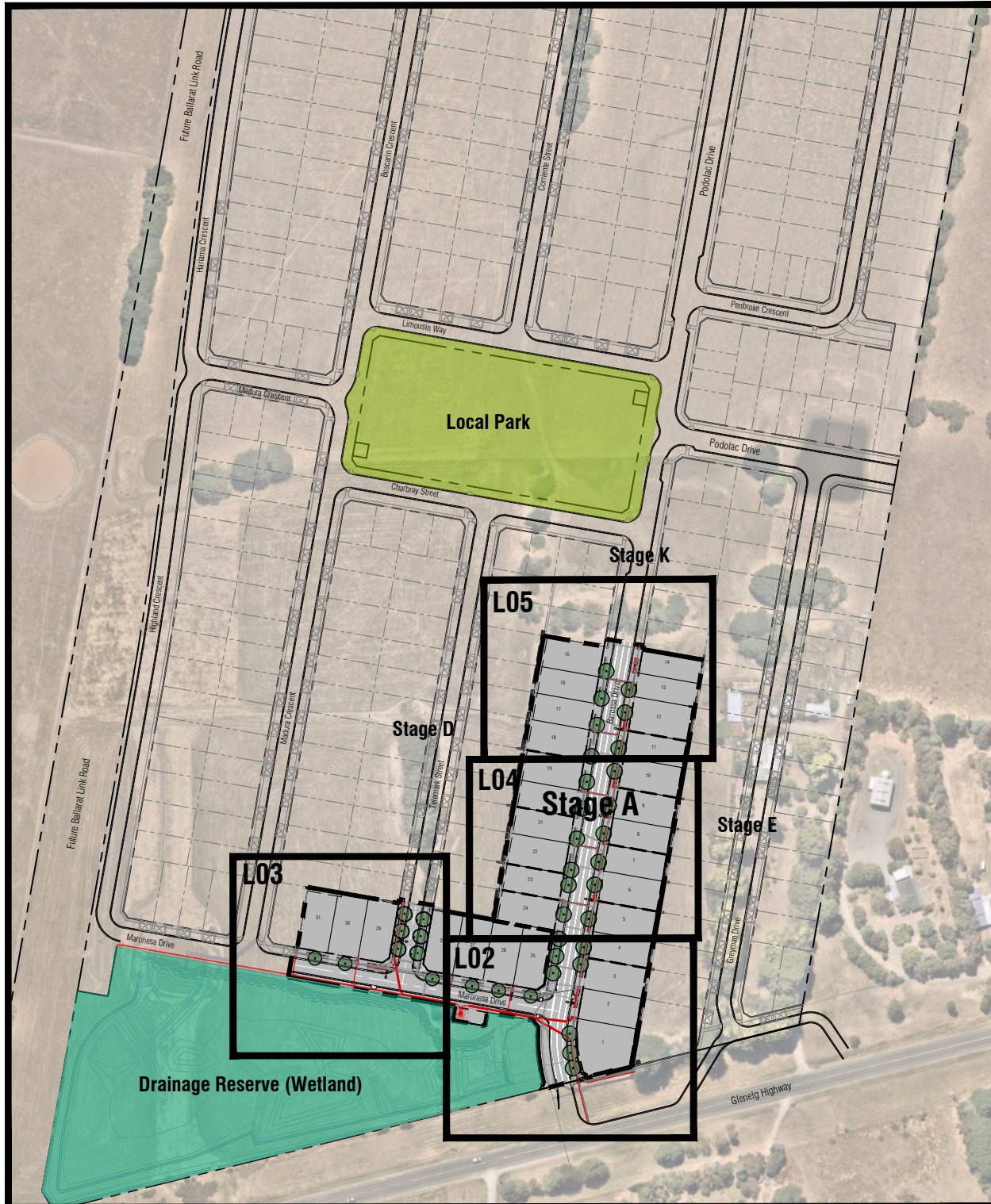
P3	Revisions re:civil plan update	AD	13.03.24
P2	Revisions re: NBN plans	AD	12.03.24
P1	Preliminary Issue for Client Review	AD	29.02.24
Revision	Description	Initials	Date

**PRELIMINARY ISSUE**

Planning Permit PLP/2023/80

## Notes

- All dimensions to be checked on site before commencing work. All measurements are in metres, unless otherwise shown.
- The locations of underground services and light poles are indicative only - refer to engineering drawings for design service offsets.
- The location and depth of services shall be verified on site prior to the commencement of works. The Contractor shall be liable for any damage to services during the landscape works.
- Standard Street Tree Offsets.
  - Standard offset from the back of kerb is 1.2m unless otherwise shown.
  - It is assumed that all Underground Cable in close proximity to the 'tree zone' \* (5m diameter x 600mm depth) shall be within conduits or have cover slabs to provide a higher level of infrastructure protection. (\*Refer 12.0 'Distribution Construction Standard Underground Trenching GA211' by Citypower and Powercor).
  - Minimum setback of 2.5m to underground electricity cable joints / tees.
  - Minimum setback of 2.0m to service assets including pits and conduit crossings.
  - Minimum setback of 0.75m to domestic service tapping points and 2.0m to stormwater outlets.
  - Minimum setback of 1.2m to footpath crossings and 3.0m to driveways where they are existing or known.
  - Minimum setback of 3.0m to fire hydrants.
  - Minimum setback of 4.0m to light poles.
- Proposed Street Trees.
  - Tree position in front of lots may change slightly due to 'actual' location of services.
  - Setback from intersection (kerb) shall be a minimum of 10m in accordance with City of Ballarat Landscape Design Manual (LDM).
  - Following City of Ballarat approval of these landscape plans any variation to the number or species of street trees requires approval by City of Ballarat.
- Planting. All trees, shrubs and groundcovers shall be planted in accordance with LDM, unless otherwise specified.
- Mulch. Mulch shall be recycled hardwood (or similar approved) in general accordance with LDM, unless otherwise specified.
- Grass Seeding. Reseed nature strips and other grassed areas where there has been disturbance due to landscape works with a proprietary grass seed mix in accordance with the LDM.



## TYPICAL TREE PLANTING DETAIL

NOT TO SCALE.

## CONTEXT AND SHEET LAYOUT - Stage A Aberdeen

**PLOT**  
LANDSCAPE ARCHITECTS  
WWW.PLOT.AU  
03 9497 7245 | 1401607324118

**PRELIMINARY**

Client / Project  
**Intega**  
Stage A  
Aberdeen, Ballarat

Drawing Title  
**Context, Plant Schedule and Tree Detail**

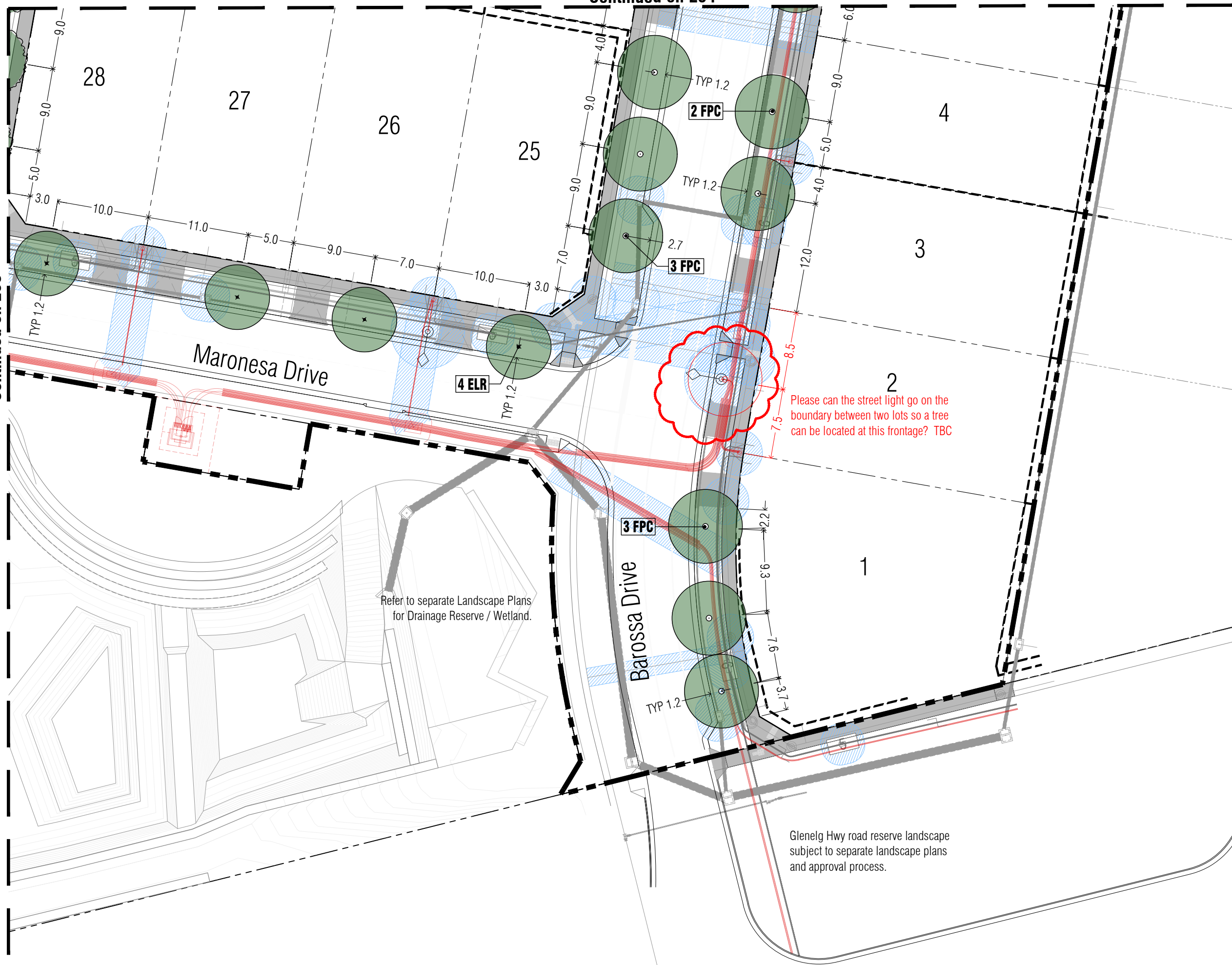
Drawn	Approved	Date	North
AD	RH	13/03/2024	
Scale (A1)	Scale (A3)	Sheet	
NTS	NTS	1 of 5	

This drawing and design is protected by copyright © PLOT Landscape Architects Pty Ltd.

Drawing Number	Revision
<b>PLA600-L01</b>	<b>P3</b>

Continued on L04

Continued on L03



P3	Revisions re:civil plan update	AD	13.03.24
P2	Revisions re: NBN plans	AD	12.03.24
P1	Preliminary Issue for Client Review	AD	29.02.24
Revision	Description	Initials	Date

**PRELIMINARY ISSUE**

Planning Permit PLP/2023/80

**Notes**

- All dimensions to be checked on site before commencing work. All measurements are in metres, unless otherwise shown.
- The locations of underground services and light poles are indicative only - refer to engineering drawings for design service offsets.
- The location and depth of services shall be verified on site prior to the commencement of works. The Contractor shall be liable for any damage to services during the landscape works.
- Standard Street Tree Offsets.
  - Standard offset from the back of kerb is 1.2m unless otherwise shown.
  - It is assumed that all Underground Cable in close proximity to the 'tree zone' (5m diameter x 600mm depth) shall be within conduits or have cover slabs to provide a higher level of infrastructure protection. (\*Refer 12.0 'Distribution Construction Standard Underground Trenching GA211' by Citypower and Powercor).
  - Minimum setback of 2.5m to underground electricity cable joints / tees.
  - Minimum setback of 2.0m to service assets including pits and conduit crossings.
  - Minimum setback of 0.75m to domestic service tapping points and 2.0m to stormwater outlets.
  - Minimum setback of 1.2m to footpath crossings and 3.0m to driveways where they are existing or known.
  - Minimum setback of 3.0m to fire hydrants.
  - Minimum setback of 4.0m to light poles.
- Proposed Street Trees.
  - Tree position in front of lots may change slightly due to 'actual' location of services.
  - Setback from intersection (kerb) shall be a minimum of 10m in accordance with City of Ballarat Landscape Design Manual (LDM).
  - Following City of Ballarat approval of these landscape plans any variation to the number or species of street trees requires approval by City of Ballarat.
- Planting. All trees, shrubs and groundcovers shall be planted in accordance with LDM, unless otherwise specified.
- Mulch. Mulch shall be recycled hardwood (or similar approved) in general accordance with LDM, unless otherwise specified.
- Grass Seeding. Reseed nature strips and other grassed areas where there has been disturbance due to landscape works with a proprietary grass seed mix in accordance with the LDM.
- Refer to drawing L01 for Plant Schedule.

**Legend**

- Proposed Street Trees - *Fraxinus pennsylvanica* 'Cinnamom' [FPC]
- Proposed Street Trees - *Eucalyptus leucoxylon* 'Rosea' [ELR]
- Plant Label and Code
- Service Offsets
- Retaining Walls (Civil works)



**PRELIMINARY**

Client / Project

Stage A  
Aberdeen, Ballarat

**Street Tree Plan 01**

Drawn	Approved	Date	North
AD	RH	13/03/2024	
Scale (A1)	Scale (A3)	Sheet	
1:200	1:400	2 of 5	

This drawing and design is protected by copyright © PLOT Landscape Architects Pty Ltd.

Drawing Number: **PLA600-L02** Revision: **P3**

P3	Revisions re:civil plan update	AD	13.03.24
P2	Revisions re: NBN plans	AD	12.03.24
P1	Preliminary Issue for Client Review	AD	29.02.24
Revision	Description	Initials	Date

**PRELIMINARY ISSUE**

Planning Permit PLP/2023/80

**Notes**

- All dimensions to be checked on site before commencing work. All measurements are in metres, unless otherwise shown.
- The locations of underground services and light poles are indicative only - refer to engineering drawings for design services offsets.
- The location and depth of services shall be verified on site prior to the commencement of works. The Contractor shall be liable for any damage to services during the landscape works.
- Standard Street Tree Offsets.
  - Standard offset from the back of kerb is 1.2m unless otherwise shown.
  - It is assumed that all Underground Cable in close proximity to the 'tree zone' \* (5m diameter x 600mm depth) shall be within conduits or have cover slabs to provide a higher level of infrastructure protection. (\*Refer 12.0 'Distribution Construction Standard Underground Trenching GA211' by Citypower and Powercor).
  - Minimum setback of 2.5m to underground electricity cable joints / tees.
  - Minimum setback of 2.0m to service assets including pits and conduit crossings.
  - Minimum setback of 0.75m to domestic service tapping points and 2.0m to stormwater outlets.
  - Minimum setback of 1.2m to footpath crossings and 3.0m to driveways where they are existing or known.
  - Minimum setback of 3.0m to fire hydrants.
  - Minimum setback of 4.0m to light poles.
- Proposed Street Trees.
  - Tree position in front of lots may change slightly due to 'actual' location of services.
  - Setback from intersection (kerb) shall be a minimum of 10m in accordance with City of Ballarat Landscape Design Manual (LDM).
  - Following City of Ballarat approval of these landscape plans any variation to the number or species of street trees requires approval by City of Ballarat.
- Planting. All trees, shrubs and groundcovers shall be planted in accordance with LDM, unless otherwise specified.
- Mulch. Mulch shall be recycled hardwood (or similar approved) in general accordance with LDM, unless otherwise specified.
- Grass Seeding. Reseed nature strips and other grassed areas where there has been disturbance due to landscape works with a proprietary grass seed mix in accordance with the LDM.
- Refer to drawing L01 for Plant Schedule.

**Legend**

- Proposed Street Trees - *Melaleuca azedarach* 'Elite' [MAE]
- Proposed Street Trees - *Eucalyptus leucoxylon* 'Rosea' [ELR]
- Plant Label and Code
- Service Offsets
- Retaining Walls (Civil works)



Continued on L02



**PRELIMINARY**

Client / Project

Stage A  
Aberdeen, Ballarat

**Street Tree Plan 02**

Drawn	Approved	Date	North
AD	RH	13/03/2024	
Scale (A1)	Scale (A3)	Sheet	
1:200	1:400	3 of 5	

This drawing and design is protected by copyright © PLOT Landscape Architects Pty Ltd.

Drawing Number: **PLA600-L03**      Revision: **P3**

P3	Revisions re:civil plan update	AD	13.03.24
P2	Revisions re: NBN plans	AD	12.03.24
P1	Preliminary Issue for Client Review	AD	29.02.24
Revision	Description	Initials	Date

**PRELIMINARY ISSUE**

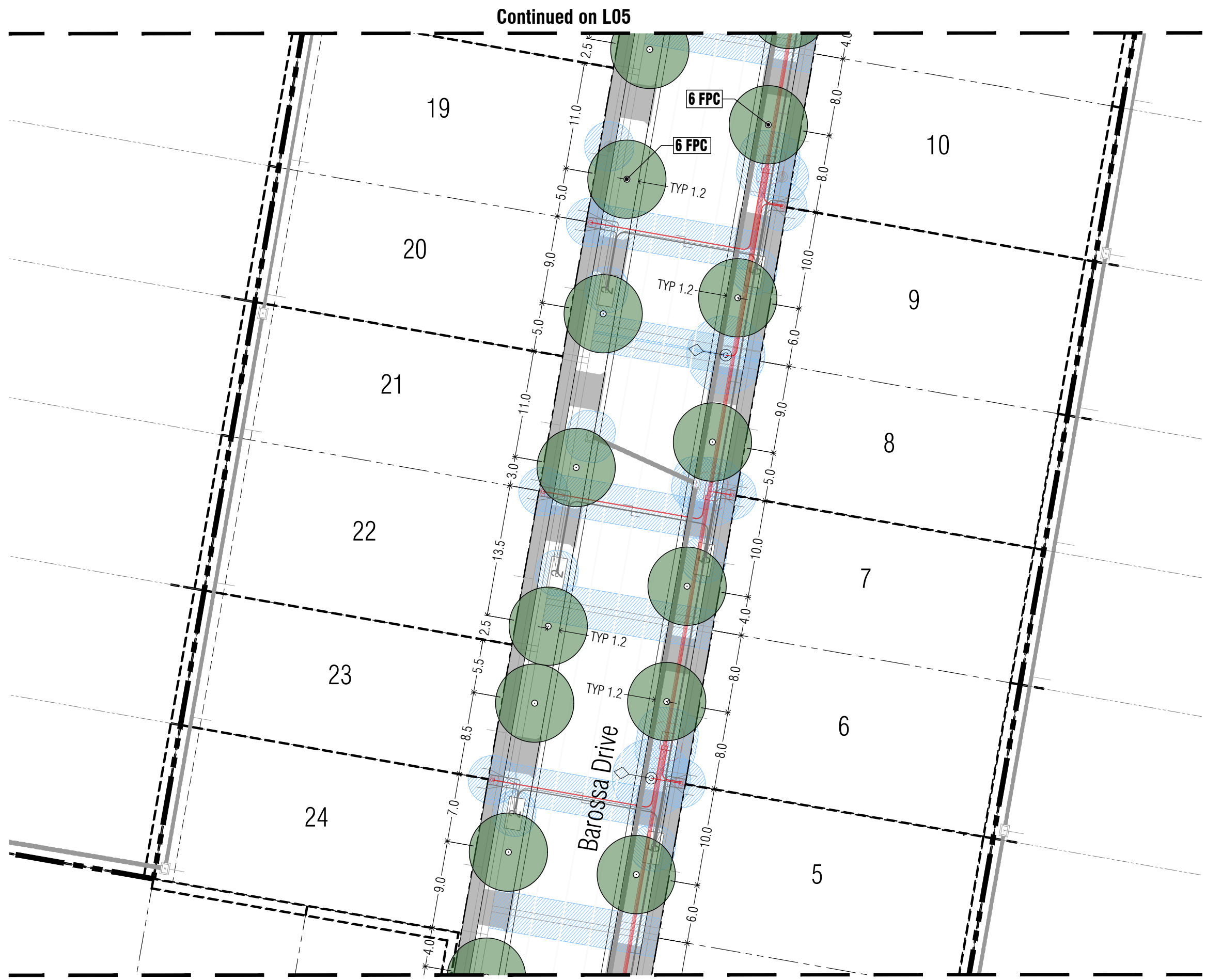
Status: Planning Permit PLP/2023/80

**Notes**

- All dimensions to be checked on site before commencing work. All measurements are in metres, unless otherwise shown.
  - The locations of underground services and light poles are indicative only - refer to engineering drawings for design service offsets.
  - The location and depth of services shall be verified on site prior to the commencement of works. The Contractor shall be liable for any damage to services during the landscape works.
  - Standard Street Tree Offsets.
    - Standard offset from the back of kerb is 1.2m unless otherwise shown.
  - It is assumed that all Underground Cable in close proximity to the 'tree zone' (5m diameter x 600mm depth) shall be within conduits or have cover slabs to provide a higher level of infrastructure protection. (\*Refer 12.0 'Distribution Construction Standard Underground Trenching GA211' by Citypower and Powercor).
  - Minimum setback of 2.5m to underground electricity cable joints / tees.
  - Minimum setback of 2.0m to service assets including pits and conduit crossings.
  - Minimum setback of 0.75m to domestic service tapping points and 2.0m to stormwater outlets.
  - Minimum setback of 1.2m to footpath crossings and 3.0m to driveways where they are existing or known.
  - Minimum setback of 3.0m to fire hydrants.
  - Minimum setback of 4.0m to light poles.
5. Proposed Street Trees.
- Tree position in front of lots may change slightly due to 'actual' location of services.
  - Setback from intersection (kerb) shall be a minimum of 10m in accordance with City of Ballarat Landscape Design Manual (LDM).
  - Following City of Ballarat approval of these landscape plans any variation to the number or species of street trees requires approval by City of Ballarat.
6. Planting. All trees, shrubs and groundcovers shall be planted in accordance with LDM, unless otherwise specified.
7. Mulch. Mulch shall be recycled hardwood (or similar approved) in general accordance with LDM, unless otherwise specified.
8. Grass Seeding. Reseed nature strips and other grassed areas where there has been disturbance due to landscape works with a proprietary grass seed mix in accordance with the LDM.
9. Refer to drawing L01 for Plant Schedule.

**Legend**

- Proposed Street Trees - *Fraxinus pennsylvanica* 'Cinnamom' [FPC]
- Plant Label and Code
- Service Offsets
- Retaining Walls (Civil works)



**PRELIMINARY**

Client / Project

Stage A  
Aberdeen, Ballarat

**Street Tree Plan 03**

Drawn	Approved	Date	North
AD	RH	13/03/2024	
Scale (A1)	Scale (A3)	Sheet	
1:200	1:400	4 of 5	

Drawing Number: **PLA600-L04** Revision: **P3**

P3	Revisions re:civil plan update	AD	13.03.24
P2	Revisions re: NBN plans	AD	12.03.24
P1	Preliminary Issue for Client Review	AD	29.02.24
Revision	Description	Initials	Date

**PRELIMINARY ISSUE**

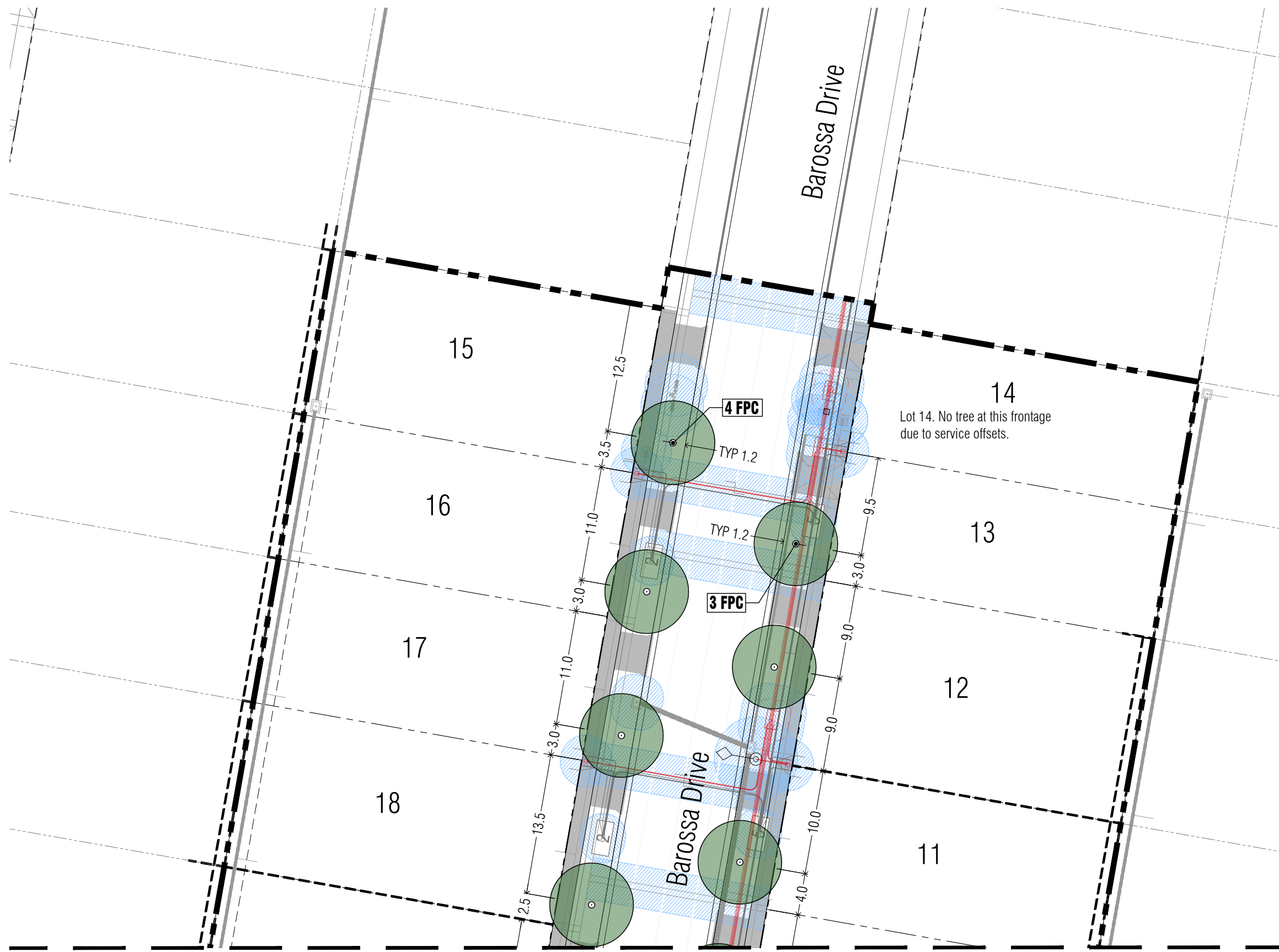
Planning Permit PLP/2023/80

**Notes**

- All dimensions to be checked on site before commencing work. All measurements are in metres, unless otherwise shown.
- The locations of underground services and light poles are indicative only - refer to engineering drawings for design service offsets.
- The location and depth of services shall be verified on site prior to the commencement of works. The Contractor shall be liable for any damage to services during the landscape works.
- Standard Street Tree Offsets.
  - Standard offset from the back of kerb is 1.2m unless otherwise shown.
  - It is assumed that all Underground Cable in close proximity to the 'tree zone' \* (5m diameter x 600mm depth) shall be within conduits or have cover slabs to provide a higher level of infrastructure protection. (\*Refer 12.0 'Distribution Construction Standard Underground Trenching GA211' by Citypower and Powercor).
  - Minimum setback of 2.5m to underground electricity cable joints / tees.
  - Minimum setback of 2.0m to service assets including pits and conduit crossings.
  - Minimum setback of 0.75m to domestic service tapping points and 2.0m to stormwater outlets.
  - Minimum setback of 1.2m to footpath crossings and 3.0m to driveways where they are existing or known.
  - Minimum setback of 3.0m to fire hydrants.
  - Minimum setback of 4.0m to light poles.
- Proposed Street Trees.
  - Tree position in front of lots may change slightly due to 'actual' location of services.
  - Setback from intersection (kerb) shall be a minimum of 10m in accordance with City of Ballarat Landscape Design Manual (LDM).
  - Following City of Ballarat approval of these landscape plans any variation to the number or species of street trees requires approval by City of Ballarat.
- Planting. All trees, shrubs and groundcovers shall be planted in accordance with LDM, unless otherwise specified.
- Mulch. Mulch shall be recycled hardwood (or similar approved) in general accordance with LDM, unless otherwise specified.
- Grass Seeding. Reseed nature strips and other grassed areas where there has been disturbance due to landscape works with a proprietary grass seed mix in accordance with the LDM.
- Refer to drawing L01 for Plant Schedule.

**Legend**

- Proposed Street Trees - *Fraxinus pennsylvanica* 'Cinnamom' [FPC]
- Plant Label and Code
- Service Offsets
- Retaining Walls (Civil works)



Continued on L04



**PRELIMINARY**

Client / Project

Stage A  
Aberdeen, Ballarat

**Street Tree Plan 04**

Drawn	Approved	Date	North
AD	RH	13/03/2024	
Scale (A1)	Scale (A3)	Sheet	
1:200	1:400	5 of 5	

This drawing and design is protected by copyright © PLOT Landscape Architects Pty Ltd.

Drawing Number: **PLA600-L05** Revision: **P3**