

**CITY OF GREATER BENDIGO**  
**Approved Landscape Plan**  
**Planning Permit: Ds/903/2020**  
**Date: 16/07/2024**  
**Approved By: Jane Marriott**

Works	<b>CANOPY COVERAGE ASSESSMENT</b>
Project	<b>Stage G4, Viewpoint</b>
Date	<b>Monday, 15 July 2024</b>
PLOT Drawing	PLA592-L01-L05_TP2

Road	<b>Boldiston Crescent</b>
------	---------------------------

Code	Tree Species	Quantity	Radius (m)	Canopy Area (m2)	TOTAL CANOPY
ELC	<i>Eucalyptus leucoxylon</i> subsp. Connata	6	4	50	302
				Total	302
				Road Reserve Area*	721

\* Road reserve area calculated for south half of road only.

<b>Canopy Coverage for</b>				<b>Boldiston Crescent</b>	<b>42%</b>
----------------------------	--	--	--	---------------------------	------------

Road **Swift Way**

Code	Tree Species	Quantity	Radius (m)	Canopy Area (m2)	TOTAL CANOPY
UPT	<i>Ulmus parvifolia</i> 'Todd'	4	4.5	64	254
				Total	254
				Road Reserve Area	382

<b>Canopy Coverage for</b>				<b>Swift Way</b>	<b>67%</b>
----------------------------	--	--	--	------------------	------------

Road **Denbow Street**

Code	Tree Species	Quantity	Radius (m)	Canopy Area (m2)	TOTAL CANOPY
PCH	<i>Pistacia chinensis</i>	12	3	28	339
				Total	339
				Road Reserve Area	1284

<b>Canopy Coverage for</b>				<b>Denbow Street</b>	<b>26%</b>
----------------------------	--	--	--	----------------------	------------

Road **Goldsworthy Street**

Code	Tree Species	Quantity	Radius (m)	Canopy Area (m2)	TOTAL CANOPY
ELC	<i>Eucalyptus leucoxylon</i> subsp. Connata	13	4	50	653
FPC	<i>Fraxinus pennsylvanica</i> 'Cimmzam'	11	4	50	553
				Total	1206
				Road Reserve Area*	3689

\* Road reserve area calculated for west half of road only.

<b>Canopy Coverage for</b>				<b>Goldsworthy Street</b>	<b>33%</b>
----------------------------	--	--	--	---------------------------	------------

				<b>Stage Total</b>	<b>35%</b>
--	--	--	--	--------------------	------------

# Contents.

## Drawing

- PLA592-L01 Contents, Context Plan and Plant Schedule
- PLA592-L02 Street Landscape Plan 1
- PLA592-L03 Street Landscape Plan 2
- PLA592-L04 Street Landscape Plan 3
- PLA592-L05 Tree Planting Detail

## Plant Schedule.

REVISION TP2

### Street Trees

Code	Botanical Name	Common Name	Planting Size	Quantity
ELC	<i>Eucalyptus leucoxylon subsp. connata</i>	Yellow Gum 'Connata' (cream flowering variety only)	45 ltr container, min. 2.2m high	19
FPC	<i>Fraxinus pennsylvanica 'Cimmzam'</i>	Cimmaron Ash	45 ltr container, min. 2.2m high	11
PCH	<i>Pistacia chinensis</i>	Chinese Pistacio	45 ltr container, min. 2.2m high	12
UPT	<i>Ulmus parvifolia 'Todd'</i>	Todd Chinese Elm	45 ltr container, min. 2.2m high	4

GREATER BENDIGO CITY COUNCIL

LANDSCAPE PLANS APPROVED

PLAN REFERRED TO IN PLANNING PERMIT  
NO: DS/903/2020

Delegated Officer: Jane Marriott

Date: 16 July 2024



Stage G4, Viewpoint - Context Plan (nts).

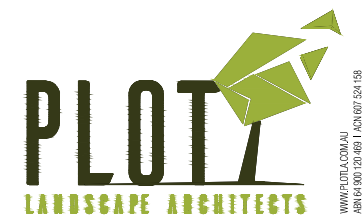
Revision	Description	Initials	Date
TP2	COGB comments re. tree species change	AD	15.07.24
TP1	Town Planning Approval	AD	14.06.24
P3	Preliminary Issue for Council Review	AD	03.11.23
P2	Revisions re: NBN and Power plans	AD	03.10.23
P1	Preliminary Issue for Client Review	AD	18.09.23

**APPROVAL ISSUE**

### Notes

PLANNING PERMIT NUMBER - DS/903/2020

1. All dimensions to be checked on site before commencing work. All measurements are in metres, unless otherwise shown.
2. The locations of underground services and light poles are indicative only - refer to electrical plans for electrical and service offsets.
3. The location and depth of services shall be verified on site prior to the commencement of works. The Contractor shall be liable for any damage to services during the landscape works.
4. Standard Street Tree Offsets.
  - It is assumed that all Underground Cable in close proximity to the 'tree zone' \* (5m diameter x 600mm depth) shall be within conduits or have cover slabs to provide a higher level of infrastructure protection. (\*Refer 12.0 'Distribution Construction Standard Underground Trenching GA211' by Citypower and Powercor).
  - 2.5m from underground electrical cable joints and tees.
  - Minimum setback of 2.0m to service assets including pits and conduit crossings.
  - Minimum setback of 1.0m to domestic service tapping points and 2.0m to stormwater outlets.
  - Minimum setback of 1.5m to footpath crossings and 3.0m to driveways where they are existing or known.
  - Minimum setback of 3.0m to fire hydrants.
  - Minimum setback of 4.0m to light poles.
5. Proposed Street Trees.
  - Where possible, trees are planted to allow a driveway within 7.0m from the Title Boundary.
  - Tree position in front of lots may change slightly due to 'actual' location of services, and constructed driveway crossings.
  - Setback from intersection (kerb) shall be a minimum of 10m (at residential intersections of 50km/h) in accordance Landscape Design Guidelines for Subdivisions (LDG)
  - Following City of Greater Bendigo approval of these landscape plans any variation to the number or species of street trees requires approval by CoGB representative.
6. Existing Trees and Vegetation. The Contractor shall confirm and protect any existing vegetation during landscape works in accordance with the Planning Permit, DWELP and Council requirements and any other agreements.
7. Planting. All trees, shrubs and groundcovers shall be planted in accordance with the LDG, unless otherwise specified.
8. Mulch. Mulch shall be recycled hardwood (or similar approved) in general accordance with the LDG unless otherwise specified.
9. Grass Seeding. Reseed nature strips and other grassed areas where there has been disturbance due to landscape works with a proprietary grass seed mix in accordance with the LDG.



Client / Project



Viewpoint - Stage G4  
Huntly, Bendigo

Drawing Title

**Contents, Context Plan and Plant Schedule**

Drawn	Approved	Date	North
AD	RH	15.07.2024	
Scale (A1)	Scale (A3)	Sheet	
NTS	NTS	1 of 5	

This drawing and design is protected by copyright © PLOT Landscape Architects Pty Ltd. www.plota.com.au

Drawing Number: **PLA592-L01** Revision: **TP2**

TP2	COGB comments re. tree species change	AD	15.07.24
TP1	Town Planning Approval	AD	14.06.24
P3	Preliminary Issue for Council Review	AD	03.11.23
P2	Revisions re: NBN and Power plans	AD	03.10.23
P1	Preliminary Issue for Client Review	AD	18.09.23
Revision	Description	Initials	Date

**APPROVAL ISSUE**

**Notes**

PLANNING PERMIT NUMBER - DS/903/2020

- All dimensions to be checked on site before commencing work. All measurements are in metres, unless otherwise shown.
- The locations of underground services and light poles are indicative only - refer to electrical plans for electrical and service offsets.
- The location and depth of services shall be verified on site prior to the commencement of works. The Contractor shall be liable for any damage to services during the landscape works.
- Standard Street Tree Offsets.
  - It is assumed that all Underground Cable in close proximity to the tree zone (5m diameter x 600mm depth) shall be within conduits or have cover slabs to provide a higher level of infrastructure protection. (Refer 12.0 'Distribution Construction Standard Underground Trenching GA211' by Citypower and Powercor).
  - 2.5m from underground electrical cable joints and tees.
  - Minimum setback of 2.0m to service assets including pits and conduit crossings.
  - Minimum setback of 1.0m to domestic service tapping points and 2.0m to stormwater outlets.
  - Minimum setback of 1.5m to footpath crossings and 3.0m to driveways where they are existing or known.
  - Minimum setback of 3.0m to fire hydrants.
  - Minimum setback of 4.0m to light poles.
- Proposed Street Trees.
  - Where possible, trees are planted to allow a driveway within 7.0m from the Title Boundary.
  - Tree position in front of lots may change slightly due to 'actual' location of services, and constructed driveway crossings.
  - Setback from intersection (kerb) shall be a minimum of 10m (at residential intersections of 50km/h) in accordance Landscape Design Guidelines for Subdivisions (LDG)
  - Following City of Greater Bendigo approval of these landscape plans any variation to the number or species of street trees requires approval by CoGB representative.
- Existing Trees and Vegetation. The Contractor shall confirm and protect any existing vegetation during landscape works in accordance with the Planning Permit, DWELP and Council requirements and any other agreements.
- Planting. All trees, shrubs and groundcovers shall be planted in accordance with the LDG, unless otherwise specified.
- Mulch. Mulch shall be recycled hardwood (or similar approved) in general accordance with the LDG unless otherwise specified.
- Grass Seeding. Reseed nature strips and other grassed areas where there has been disturbance due to landscape works with a proprietary grass seed mix in accordance with the LDG.
- Refer to drawing L01 for Plant Schedule.

**Legend**

- Existing trees planted as part of another stage.
- Proposed Street Trees (*Pistacia chinensis*) [PCH]
- Proposed Street Trees (*Eucalyptus leucocylon subsp. connata*) [ELC]
- Alternative tree location if driveway is located where street tree is proposed.
- Service offsets / setbacks
- Plant Label and Code
- Post and wire fence
- Timber bush mulch



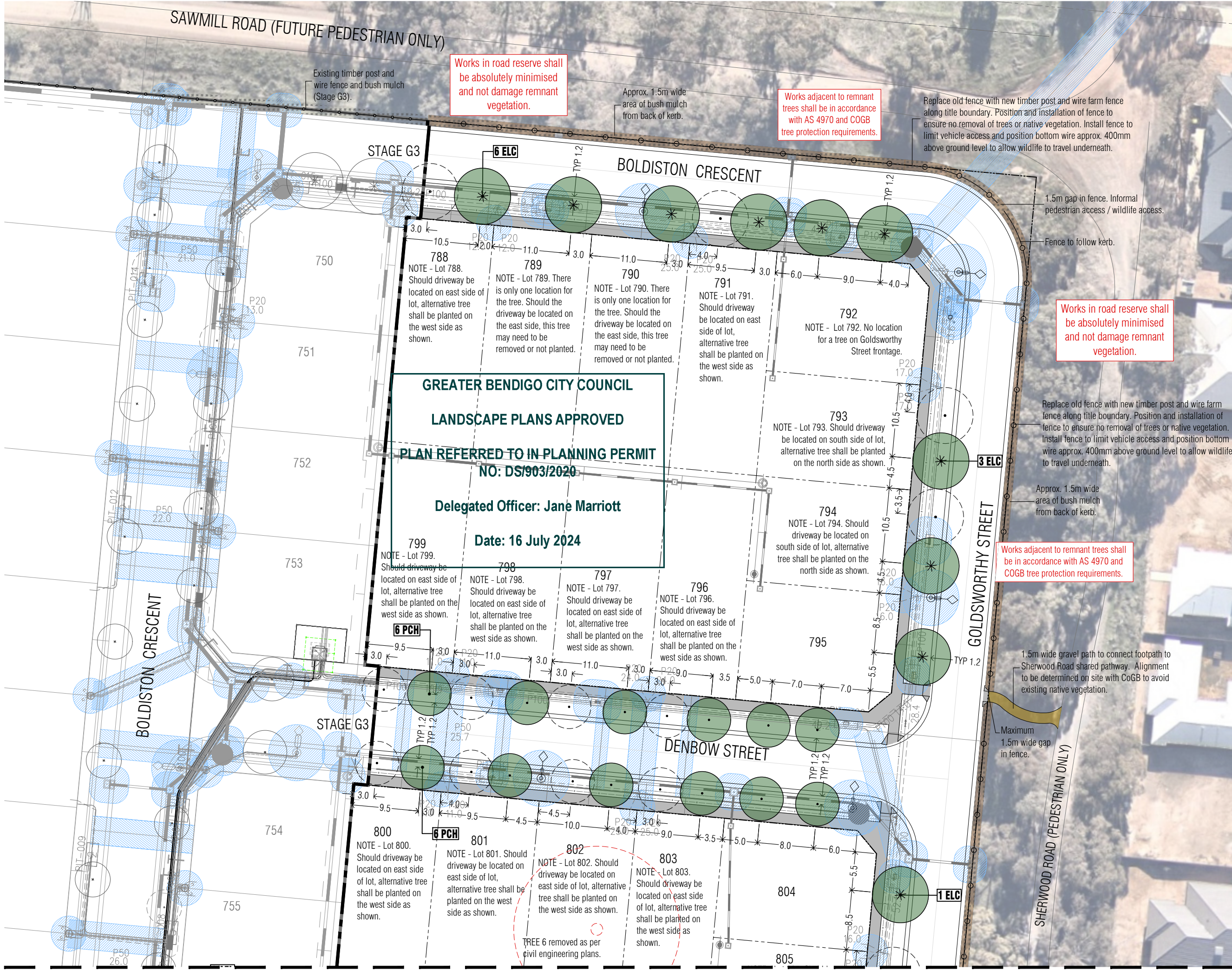
Client / Project  
**Intega**  
 Viewpoint - Stage G4  
 Huntly, Bendigo

**Street Landscape Plan 1**

Drawn	Approved	Date	North
AD	RH	15.07.2024	
Scale (A1)	Scale (A3)	Sheet	
1:250	1:500	2 of 5	

This drawing and design is protected by copyright © PLOT Landscape Architects Pty Ltd. www.plota.com.au

**PLA592-L02 TP2**



Works in road reserve shall be absolutely minimised and not damage remnant vegetation.

Works adjacent to remnant trees shall be in accordance with AS 4970 and COGB tree protection requirements.

Works in road reserve shall be absolutely minimised and not damage remnant vegetation.

Works adjacent to remnant trees shall be in accordance with AS 4970 and COGB tree protection requirements.

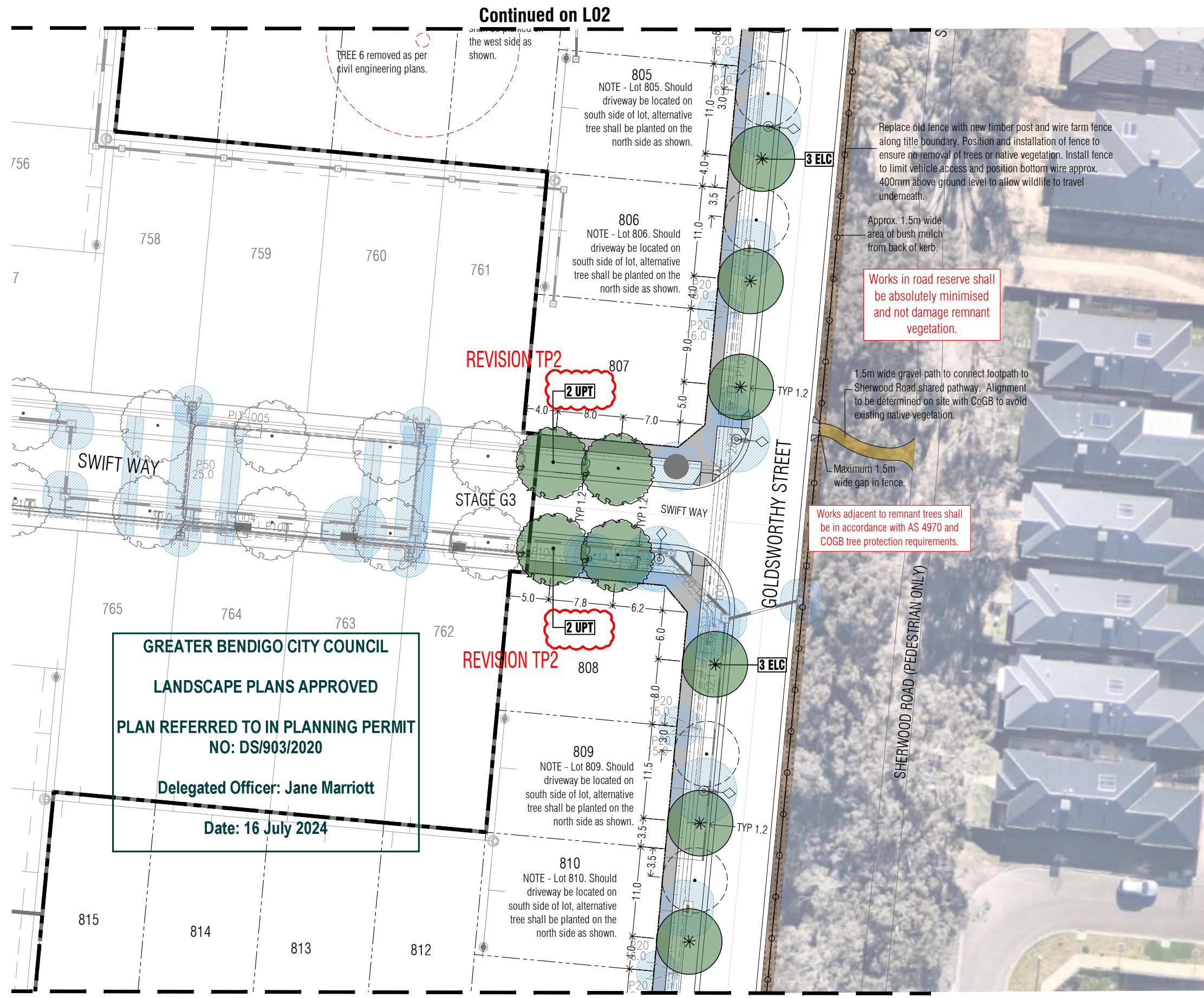
**GREATER BENDIGO CITY COUNCIL**  
**LANDSCAPE PLANS APPROVED**  
**PLAN REFERRED TO IN PLANNING PERMIT**  
**NO: DS/903/2020**  
**Delegated Officer: Jane Marriott**  
**Date: 16 July 2024**

Continued on L03

TP2	COGB comments re. tree species change	AD	15.07.24
TP1	Town Planning Approval	AD	14.06.24
P3	Preliminary Issue for Council Review	AD	03.11.23
P2	Revisions re: NBN and Power plans	AD	03.10.23
P1	Preliminary Issue for Client Review	AD	18.09.23
Revision	Description	Initials	Date

**APPROVAL ISSUE**

- Notes**
- PLANNING PERMIT NUMBER - DS/903/2020
- All dimensions to be checked on site before commencing work. All measurements are in metres, unless otherwise shown.
  - The locations of underground services and light poles are indicative only - refer to electrical plans for electrical and service offsets.
  - The location and depth of services shall be verified on site prior to the commencement of works. The Contractor shall be liable for any damage to services during the landscape works.
  - Standard Street Tree Offsets.
    - It is assumed that all Underground Cable in close proximity to the 'tree zone' \* (5m diameter x 600mm depth) shall be within conduits or have cover slabs to provide a higher level of infrastructure protection. (\*Refer 12.0 'Distribution Construction Standard Underground Trenching GA211' by Citypower and Powercor).
    - 2.5m from underground electrical cable joints and tees.
    - Minimum setback of 2.0m to service assets including pits and conduit crossings.
    - Minimum setback of 1.0m to domestic service tapping points and 2.0m to stormwater outlets.
    - Minimum setback of 1.5m to footpath crossings and 3.0m to driveways where they are existing or known.
    - Minimum setback of 3.0m to fire hydrants.
    - Minimum setback of 4.0m to light poles.
  - Proposed Street Trees.
    - Where possible, trees are planted to allow a driveway within 7.0m from the Title Boundary.
    - Tree position in front of lots may change slightly due to 'actual' location of services, and constructed driveway crossings.
    - Setback from intersection (kerb) shall be a minimum of 10m (at residential intersections of 50km/h) in accordance Landscape Design Guidelines for Subdivisions (LDG)
    - Following City of Greater Bendigo approval of these landscape plans any variation to the number or species of street trees requires approval by CoGB representative.
  - Existing Trees and Vegetation. The Contractor shall confirm and protect any existing vegetation during landscape works in accordance with the Planning Permit, DWELP and Council requirements and any other agreements.
  - Planting. All trees, shrubs and groundcovers shall be planted in accordance with the LDG, unless otherwise specified.
  - Mulch. Mulch shall be recycled hardwood (or similar approved) in general accordance with the LDG unless otherwise specified.
  - Grass Seeding. Reseed nature strips and other grassed areas where there has been disturbance due to landscape works with a proprietary grass seed mix in accordance with the LDG.
  - Refer to drawing L01 for Plant Schedule.



**GREATER BENDIGO CITY COUNCIL**

**LANDSCAPE PLANS APPROVED**

**PLAN REFERRED TO IN PLANNING PERMIT NO: DS/903/2020**

**Delegated Officer: Jane Marriott**

**Date: 16 July 2024**

**Legend**

	Proposed Street Trees ( <i>Ulmus parvifolia</i> 'Todd') [UPT]
	Proposed Street Trees ( <i>Eucalyptus leucocylon</i> subsp. <i>connata</i> ) [ELC]
	Alternative tree location if driveway is located where street tree is proposed.
	Service offsets / setbacks
	Plant Label and Code
	Post and wire fence
	Timber bush mulch



Client / Project

**Intega**

Viewpoint - Stage G4  
Huntly, Bendigo

**Street Landscape Plan 2**

Drawn	Approved	Date	North
AD	RH	15.07.2024	
Scale (A1)	Scale (A3)	Sheet	
1:250	1:500	3 of 5	

This drawing and design is protected by copyright © PLOT Landscape Architects Pty Ltd. www.plota.com.au

Drawing Number: **PLA592-L03**      Revision: **TP2**

**Continued on L04**

Continued on L03



TP2	COGB comments re. tree species change	AD	15.07.24
TP1	Town Planning Approval	AD	14.06.24
P3	Preliminary Issue for Council Review	AD	03.11.23
P2	Revisions re: NBN and Power plans	AD	03.10.23
P1	Preliminary Issue for Client Review	AD	18.09.23
Revision	Description	Initials	Date

**APPROVAL ISSUE**

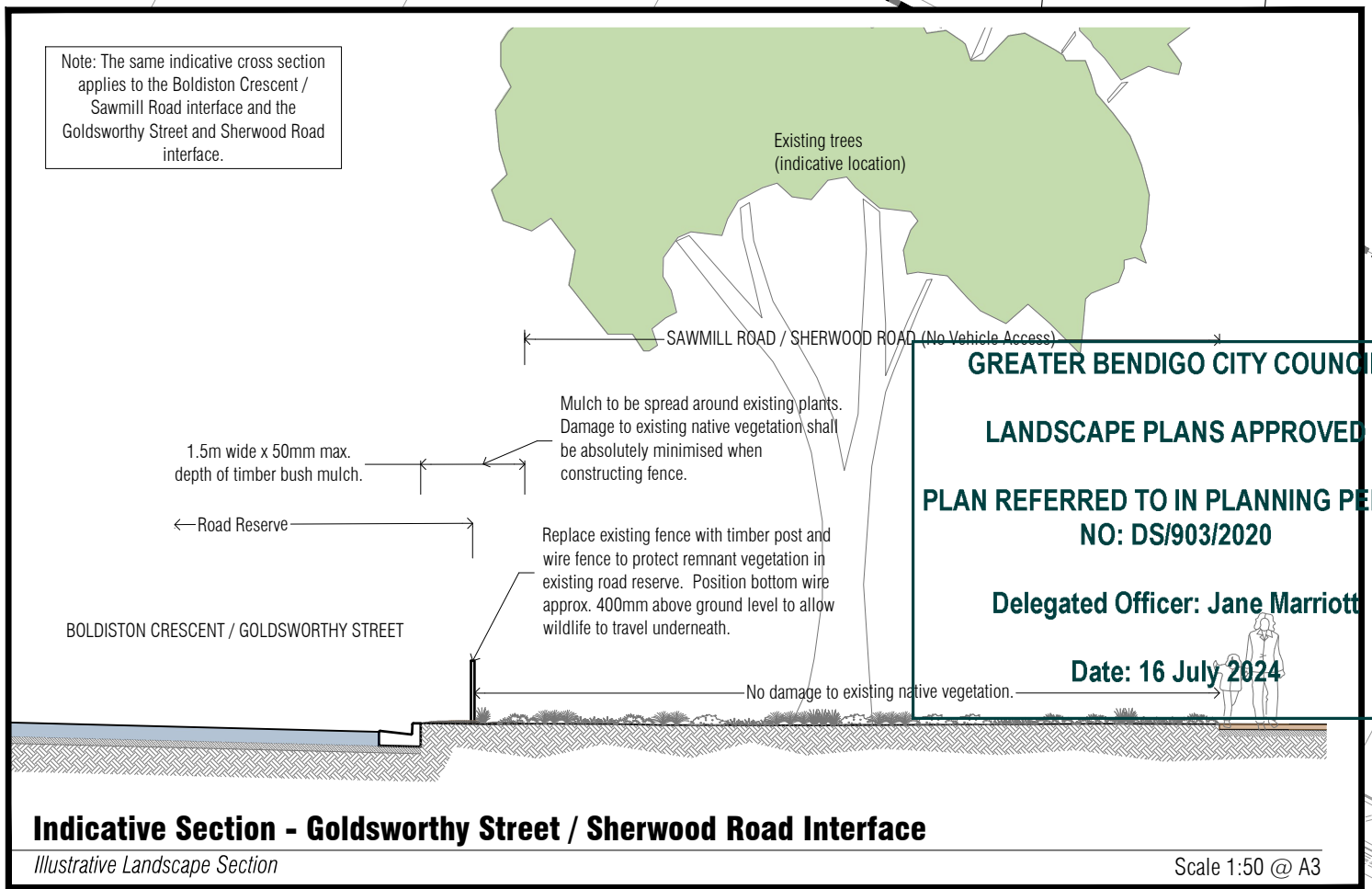
- Status**
- Notes**
- PLANNING PERMIT NUMBER - DS/903/2020
- All dimensions to be checked on site before commencing work. All measurements are in metres, unless otherwise shown.
  - The locations of underground services and light poles are indicative only - refer to electrical plans for electrical and service offsets.
  - The location and depth of services shall be verified on site prior to the commencement of works. The Contractor shall be liable for any damage to services during the landscape works.
  - Standard Street Tree Offsets.
    - It is assumed that all Underground Cable in close proximity to the 'tree zone' (5m diameter x 600mm depth) shall be within conduits or have cover slabs to provide a higher level of infrastructure protection. (\*Refer 12.0 'Distribution Construction Standard Underground Trenching GA211' by Citypower and Powercor).
    - 2.5m from underground electrical cable joints and tees.
    - Minimum setback of 2.0m to service assets including pits and conduit crossings.
    - Minimum setback of 1.0m to domestic service tapping points and 2.0m to stormwater outlets.
    - Minimum setback of 1.5m to footpath crossings and 3.0m to driveways where they are existing or known.
    - Minimum setback of 3.0m to fire hydrants.
    - Minimum setback of 4.0m to light poles.
  - Proposed Street Trees.
    - Where possible, trees are planted to allow a driveway within 7.0m from the Title Boundary.
    - Tree position in front of lots may change slightly due to 'actual' location of services, and constructed driveway crossings.
    - Setback from intersection (kerb) shall be a minimum of 10m (at residential intersections of 50km/h) in accordance Landscape Design Guidelines for Subdivisions (LDG)
    - Following City of Greater Bendigo approval of these landscape plans any variation to the number or species of street trees requires approval by CoGB representative.
  - Existing Trees and Vegetation. The Contractor shall confirm and protect any existing vegetation during landscape works in accordance with the Planning Permit, DWELP and Council requirements and any other agreements.
  - Planting. All trees, shrubs and groundcovers shall be planted in accordance with the LDG, unless otherwise specified.
  - Mulch. Mulch shall be recycled hardwood (or similar approved) in general accordance with the LDG unless otherwise specified.
  - Grass Seeding. Reseed nature strips and other grassed areas where there has been disturbance due to landscape works with a proprietary grass seed mix in accordance with the LDG.
  - Refer to drawing L01 for Plant Schedule.

**Legend**

- Proposed Street Trees (*Eucalyptus leucocylon* subsp. *connata*) [ELC]
- Proposed Street Trees (*Fraxinus pennsylvanica* 'Cinnamom') [FPC]
- Alternative tree location if driveway is located where street tree is proposed.
- Service offsets / setbacks
- Plant Label and Code
- Post and wire fence
- Timber bush mulch



Note: The same indicative cross section applies to the Boldiston Crescent / Sawmill Road interface and the Goldsworthy Street and Sherwood Road interface.



**GREATER BENDIGO CITY COUNCIL**

**LANDSCAPE PLANS APPROVED**

**PLAN REFERRED TO IN PLANNING PERMIT NO: DS/903/2020**

**Delegated Officer: Jane Marriott**

**Date: 16 July 2024**

Client / Project

**Intega**

Viewpoint - Stage G4  
Huntly, Bendigo

Drawing Title

**Street Landscape Plan 3**

Drawn	Approved	Date	North
AD	RH	15.07.2024	
Scale (A1)	Scale (A3)	Sheet	
1:250	1:500	4 of 5	

This drawing and design is protected by copyright © PLOT Landscape Architects Pty Ltd. www.plotla.com.au

Drawing Number: **PLA592-L04**      Revision: **TP2**

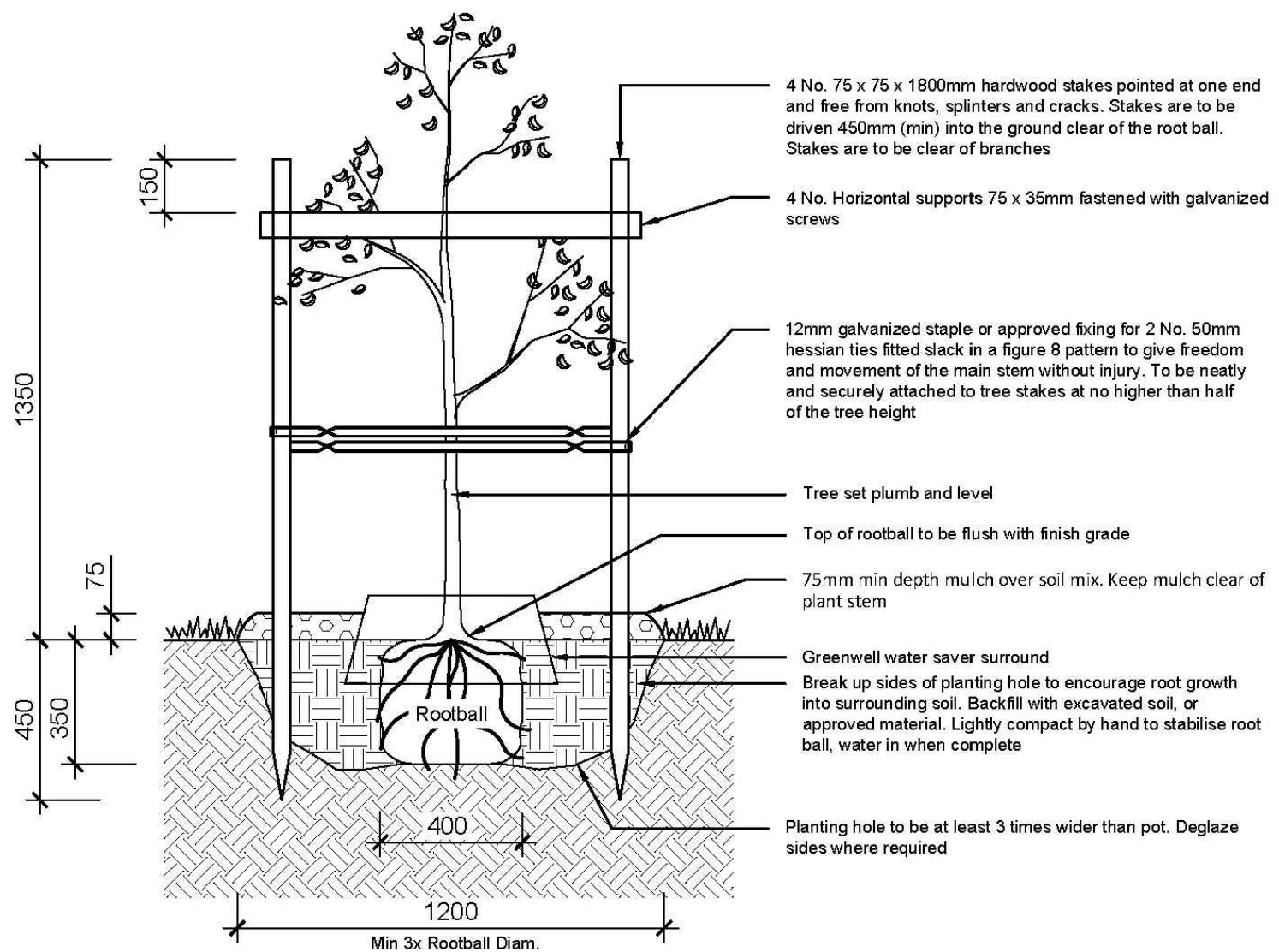
TP2	COGB comments re. tree species change	AD	15.07.24
TP1	Town Planning Approval	AD	14.06.24
P3	Preliminary Issue for Council Review	AD	03.11.23
P2	Revisions re. NBN and Power plans	AD	03.10.23
P1	Preliminary Issue for Client Review	AD	18.09.23
Revision	Description	Initials	Date

**APPROVAL ISSUE**

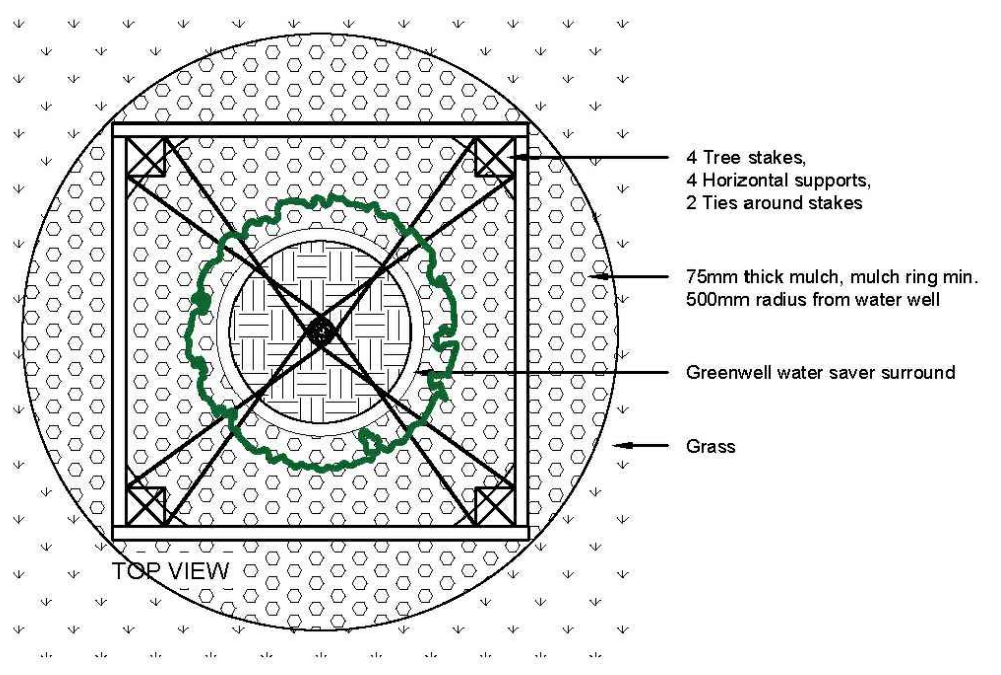
**Notes**

PLANNING PERMIT NUMBER - DS/903/2020

- All dimensions to be checked on site before commencing work. All measurements are in metres, unless otherwise shown.
- The locations of underground services and light poles are indicative only - refer to electrical plans for electrical and service offsets.
- The location and depth of services shall be verified on site prior to the commencement of works. The Contractor shall be liable for any damage to services during the landscape works.



Tree Planting Detail - Elevation (nts).



Tree Guard - Plan View (nts).

**NOTE:**  
Contractor is to undertake a Dial Before You Dig to secure all services prior to any excavation or other disturbance of the ground.

**TREE PLANTING NOTES:**

- SUPPLY:** Tree stock to confirm to AS 2303: 2018 Tree stock for landscape use.
- PLACEMENT AND INSTALLATION:** Trees are to be located as per the City of Greater Bendigo approved plan. Trees are to be root pruned and planted at a depth plumb and level with the existing site.
- MATERIALS:**
  - 45L/40cm Tree
  - Hardwood stakes (75mm x 75mm x 1800mm)
  - Horizontal supports (75 x 35mm)
  - Hessian tree tie: Jute webbing (50mm wide)
  - Galvanised staples (12mm)
  - Greenwell Water Saving Surround (black)
  - Mulch (as specified)
- MAINTENANCE:**
  - Maintenance period to be a minimum 24 months (beginning from planting date/ Practical Completion - which ever is later) and must include 2 full summers.
  - Must include regular irrigation, formative pruning and weeding.
  - Trees to be pruned in accordance with AS 4373-2007 Pruning of Amenity Trees.

**GREATER BENDIGO CITY COUNCIL**

**LANDSCAPE PLANS APPROVED**

**PLAN REFERRED TO IN PLANNING PERMIT NO: DS/903/2020**

**Delegated Officer: Jane Marriott**

**Date: 16 July 2024**



Client / Project

**Intega**

Viewpoint - Stage G4  
Huntly, Bendigo

**Tree Planting Detail**

Drawn	Approved	Date
AD	RH	15.07.2024
Scale (A1)	Scale (A3)	Sheet
NTS	NTS	5 of 5

This drawing and design is protected by copyright © PLOT Landscape Architects Pty Ltd. www.plotla.com.au

**PLA592-L05 TP2**